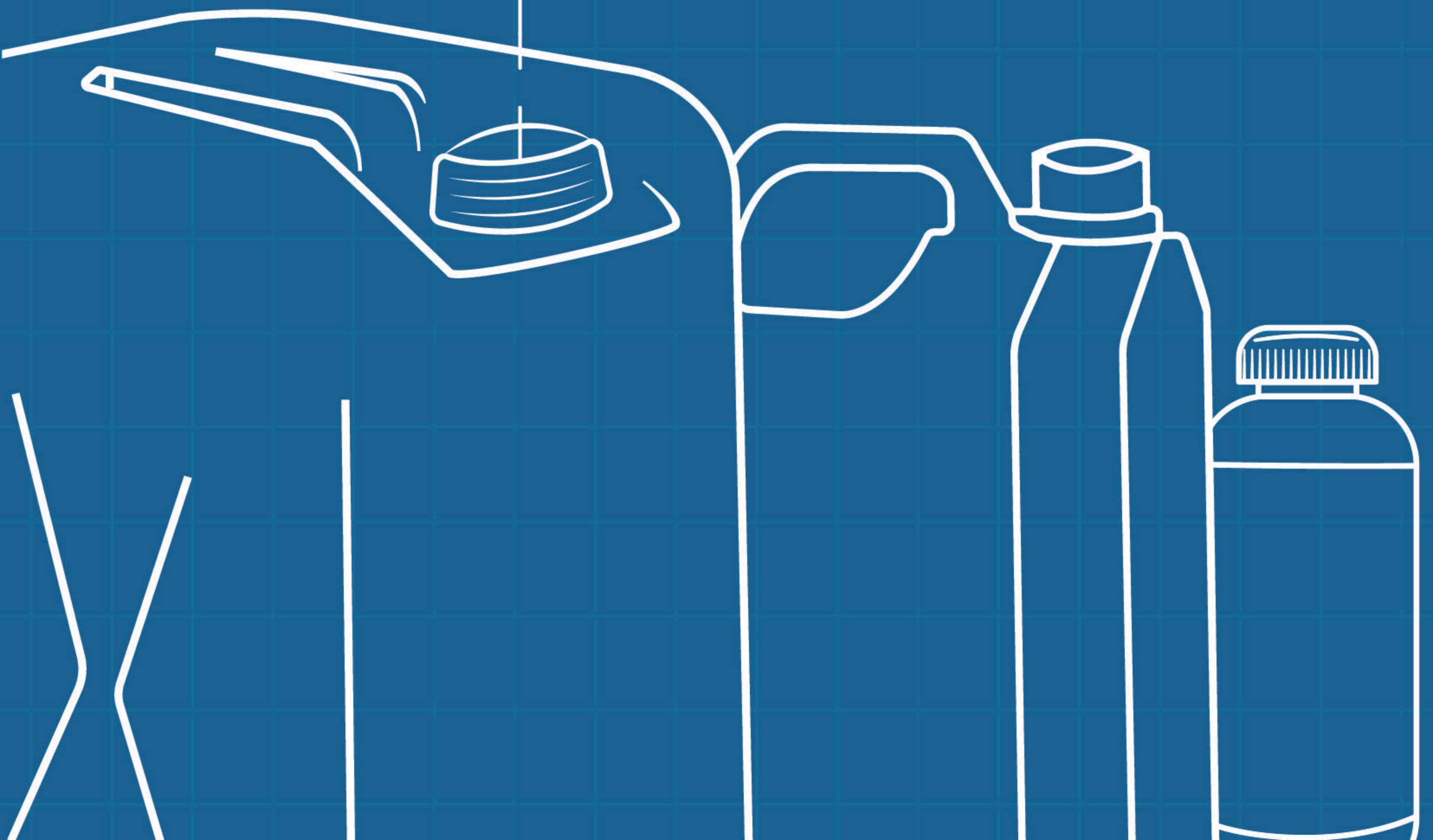
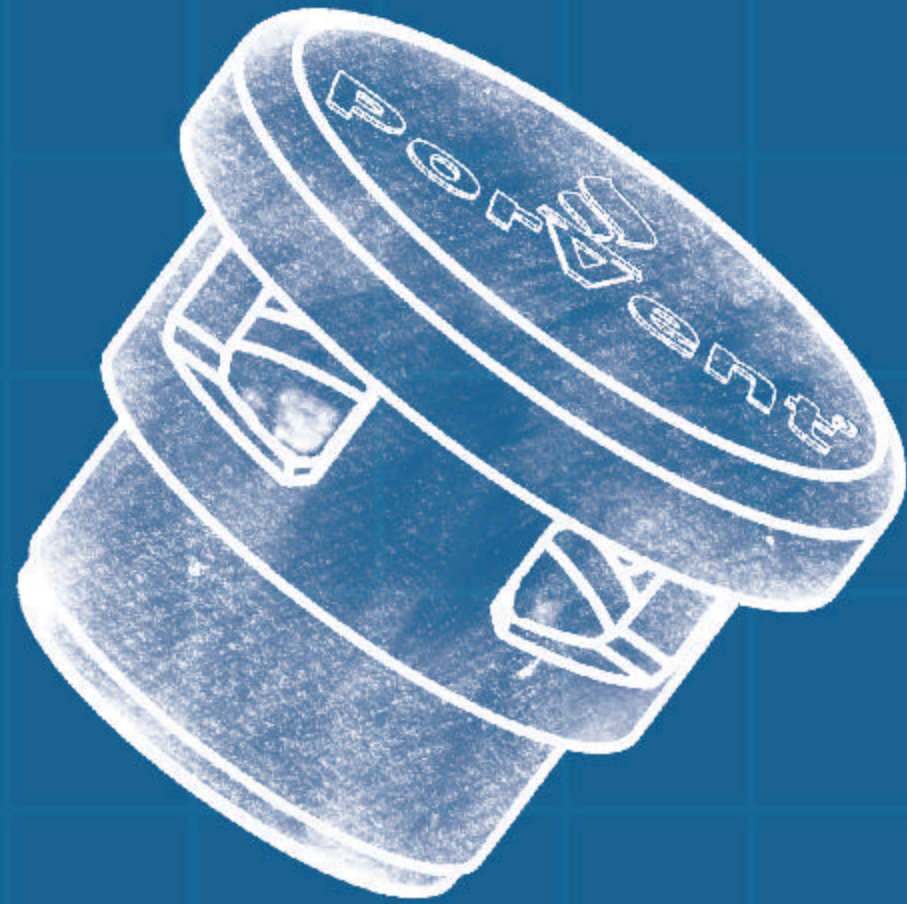
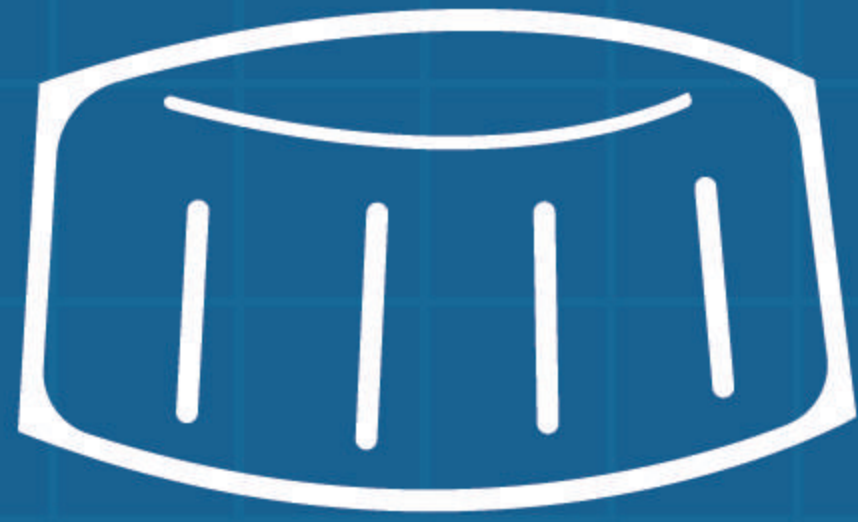




# PACKAGING VENTS



## WHY DOES PACKAGING NEED VENTING?

Bottles, Jerry cans & Drums can fail (leak or de-shape) due to various factors. Deformation of the packaging results in reduced packaging performance, leakage, financial loss to the company due to replacement and messy clean ups, reduction of content shelf life and loss of brand reputation.

PorVent® PTFE Vents when incorporated into your packaging, allow the container to breathe and prevent the contents from leaking. These vents are manufactured using microporous PTFE membrane which is weldable, breathable, food grade and chemically inert.

## CORE PRODUCT FUNCTION



Block entry of contaminants



Keep packaging leak-proof



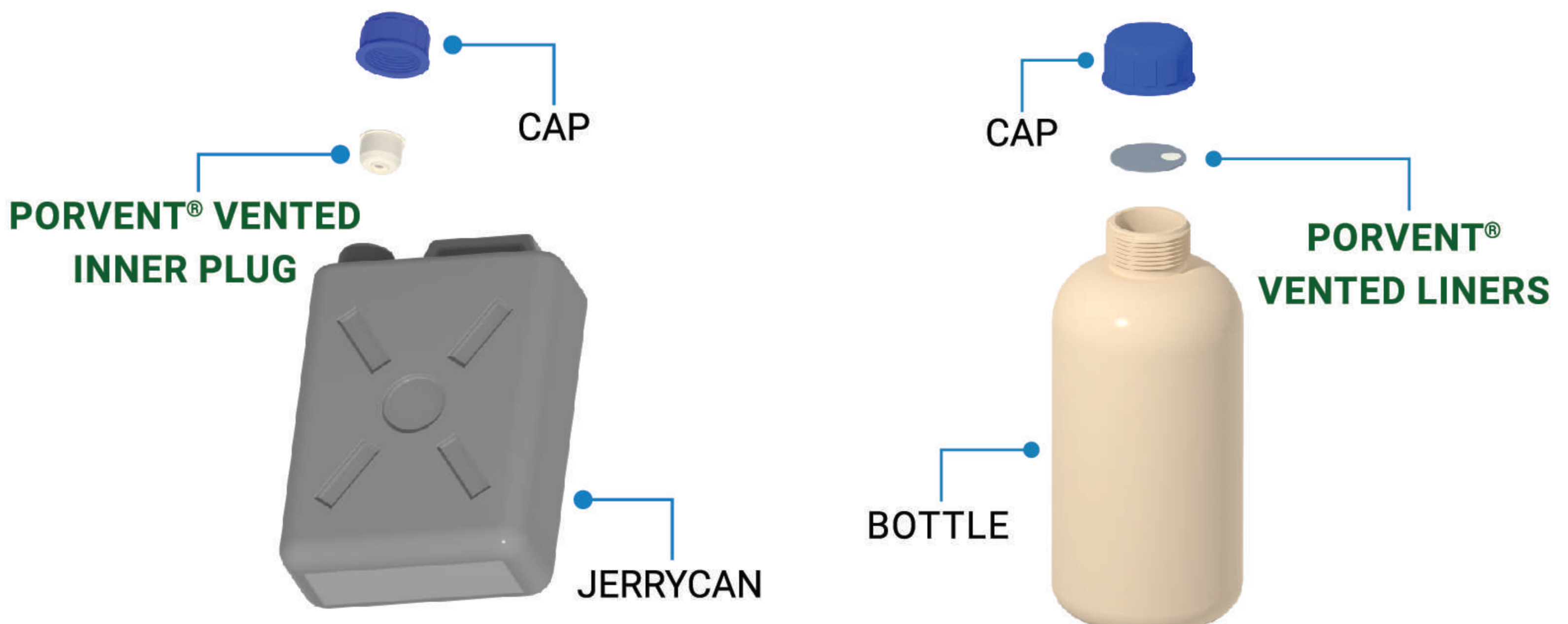
Continuously equalize pressure



Optimize cost

PorVent® Chemical packaging vents undergo various in-house tests to ensure their performance and efficiency. Our QC team tests all products for the following parameters:

- Airflow Test
- Product Compatibility Test
- Water Entry Pressure Test
- Weld Peel Test
- Barrel Drop Test
- Visual Test



APPLICATION INDUSTRIES



AGROCHEMICALS, PESTICIDES  
& BIO-FERTILIZERS



PEROXIDES & ACIDS



DOMESTIC & INDUSTRIAL  
CLEANERS



POULTRY & VETERINARY  
FORMULATIONS



COSMETICS



FOOD  
SUPPLEMENTS



CONSTRUCTION AND  
WATER TREATMENT CHEMICALS



PHARMA

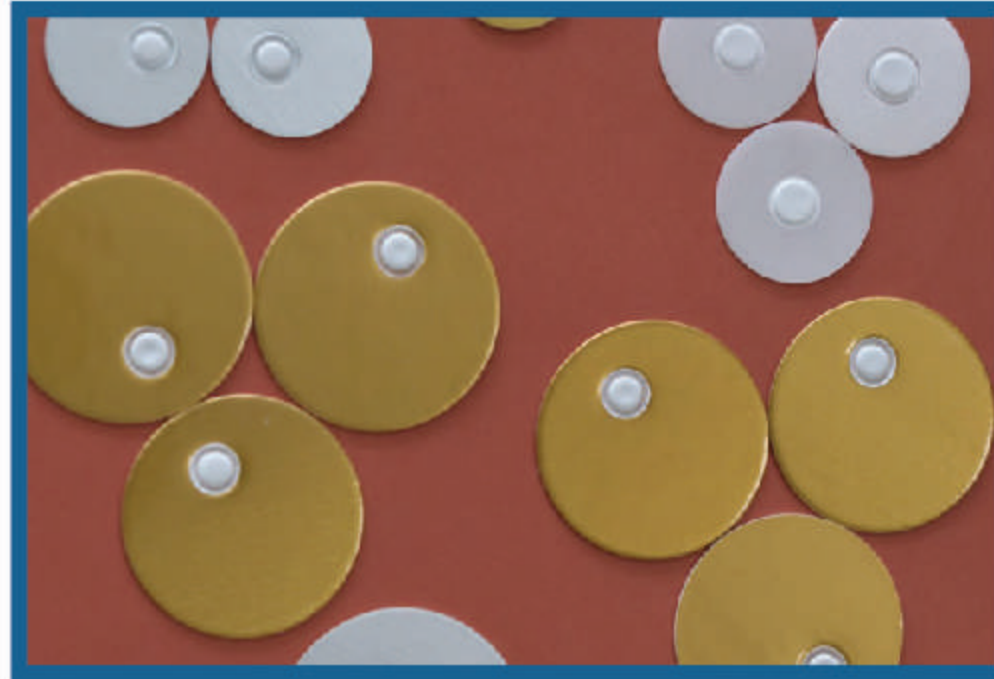
PorVent® Venting solutions are breathable chemical repellent PTFE components that can be incorporated into molded parts or HDPE and PET liners. They are weldable, chemically inert and thermally resistant with high tensile strength.

**PORVENT® VENTED PRODUCTS**



Push-Fit Plugs

- High quality HDPE plugs with breathable PTFE membrane
- Designed to be securely press-fit into caps
- Available in 4 variants - PV10, PV15, PV17 and PV38



Liners

- High quality Induction and EPE liners with breathable PTFE membrane
- Designed to ensure zero leakage
- Available for HDPE, PET and Glass bottles in custom sizes



Inner Plugs

- High quality HDPE plugs with breathable PTFE membrane
- Designed to be securely press-fit into mouth of a Bottle or Jerry Can
- Available from 19mm to 50mm or custom ODs



Caps

- High Quality HDPE or PP Caps
- Designed with a groove for easy push fit plug installation
- Available in DIN51 and DIN61



Bungs

- High Quality HDPE Bungs
- Suitable for 210 ltr Drums
- 2 inch Bung with 55.30mm thread



Flexible Packaging Vents

- Bi-directional air flow
- Compatible with fine powders and coarse granules
- Oleophobic liquid repellent variant available

**PORVENT®'S MEMBRANE TECHNOLOGY**

Porous PTFE (polytetrafluoroethylene) is a high-performance material used in various applications where durability and reliability are crucial. This versatile material exhibits excellent liquid and dust repellence while allowing air to flow omnidirectionally through it. Its unique composition makes it ideal for protection vents commonly used by the packaging, electrical/automotive, and medical industries.

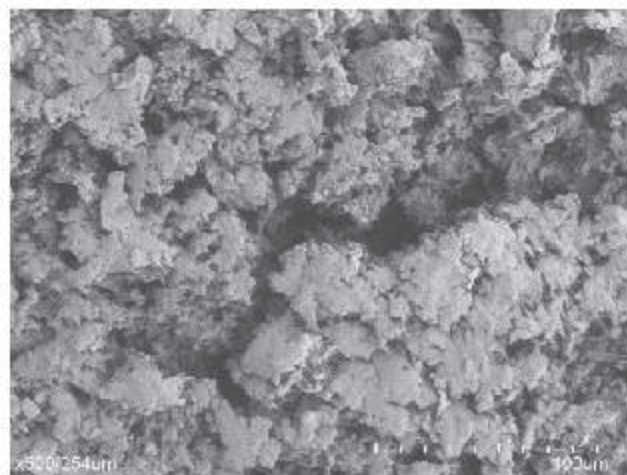
There are two types of porous PTFE: expanded PTFE (ePTFE), and sintered PTFE (sPTFE).

**MANUFACTURING PROCESS**

***Its like baking a cake!***

Porex sPTFE begins as a powder with tight particle size distribution. The powder goes through a forming and sintering process that fuses particles together but also creates a void between them.

**sPTFE Membrane**



**DURABILITY**

Tough and robust. Not easily damaged when handled

**SUPPORT**

Pure PTFE, no lamination required

**AIRFLOW**

Stable and dependable flow rates

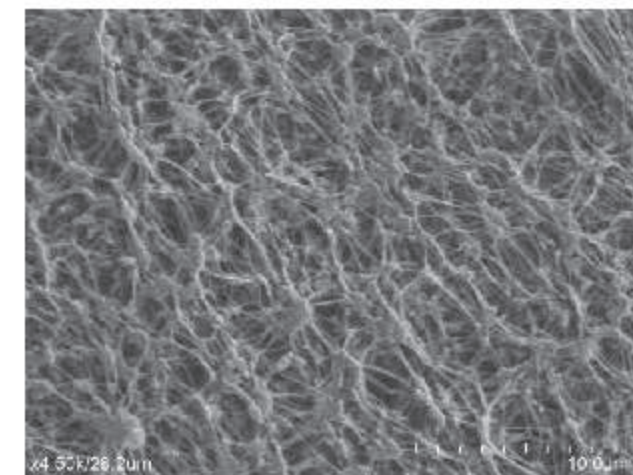
**REPELLENCE**

Inert and highly effective at material repellence

***Heat and stretch rapidly!***

ePTFE is made by extrusion of PTFE resin mixed with a lubricant. The microporous structure of ePTFE is obtained by a process that involves rapid sequential stretching of the extruded shape at high temperature.

**ePTFE Membrane**



**DURABILITY**

Easily damaged when handled

**SUPPORT**

Has to be laminated with non-PTFE materials such as adhesives and polybackings

**AIRFLOW**

High, but inconsistent flow rates due to fragile nature

**REPELLENCE**

Inert and repellent, but tends to leave residue behind





Delivering innovation  
driven solutions to  
the world



PREFERRED  
CONVERTER

Technology International, 404, Synergy Square,  
Krishna Industrial Estate, Gorwa, Vadodara - 390016, Gujarat, India

+91-8141085000 • +91 265 - 2280282, 2282006

[www.porvent.com](http://www.porvent.com) | [info@porvent.com](mailto:info@porvent.com)