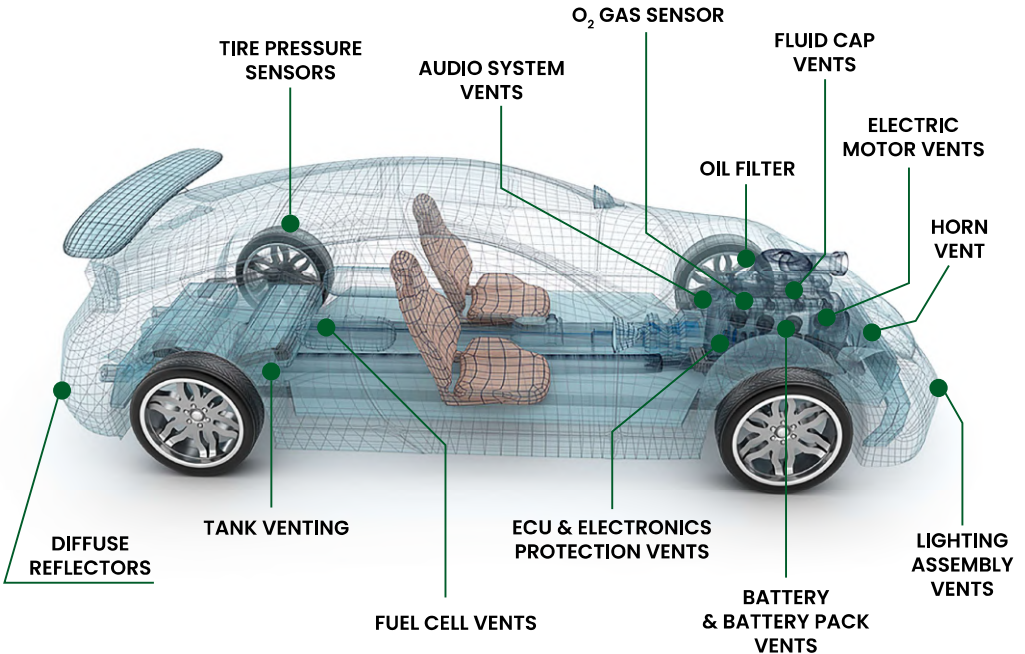


# AUTOMOTIVE VENTS



## (VENTS FOR AUTOMOTIVE APPLICATION)

All vehicles require enclosure protection vents and PorVent® has you covered with a wide variety of solutions. PorVent® develops enclosure protection venting solutions and partners with leading automotive manufacturers to protect their components through effective pressure equalization, reduced condensation and protection against oil, humidity and other contaminants.

### AUTOMOTIVE VENT FUNCTIONS

- **Ingress Protection:** Protect sensitive devices such as sensors, ECUs, battery packs, and power train electronics from damage caused by moisture, particles, and liquids.
- **Reduce Condensation:** Reduce the risk of condensation and corrosion inside the enclosure, which can affect the functionality and reliability of the device.
- **Constant Pressure Equalisation:** Prevent pressure build-up or vacuum inside the enclosure, which can cause deformation, leakage, or failure of the device.
- **Thermal Management:** Improve the performance and efficiency of the device by allowing heat dissipation and air circulation.

**SOLUTIONS SUITED TO YOUR NEEDS**

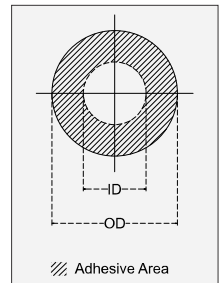
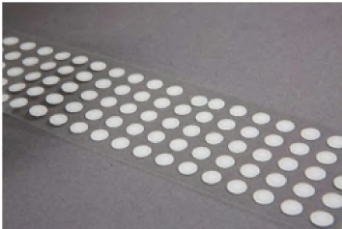
**PORVENT® ADHESIVE DISC SERIES**

Lowest AIRFLOW Highest	Sr. #	Dimension OD / ID (mm)*	Material Series				
			AD01	AD01L	AD02	AD03	AD04
	1	5.0 / 2.0	PV-AD01A	PV-AD01LA	PV-AD02A	PV-AD03A	PV-AD04A
	2	7.0 / 3.0	PV-AD01B	PV-AD01LB	PV-AD02B	PV-AD03B	PV-AD04B
	3	10.0 / 6.0	PV-AD01C	PV-AD01LC	PV-AD02C	PV-AD03C	PV-AD04C
	4	12.7 / 7.1	PV-AD01D PV-AD01DT*	PV-AD01LD	PV-AD02D PV-AD02DH# PV-AD02DTH*#	PV-AD03D	PV-AD04D
	5	20.0 / 13.0	PV-AD01E	PV-AD01LE	PV-AD02E	PV-AD03E	PV-AD04E
	6	30.0 / 25.0 - Oleo	PVAD01FT				

\*Oleophobic  
#High Temperature



**ADHESIVE DISC**









Adhesive disc vents are made of a thin membrane of sPTFE (sintered polytetrafluoroethylene). Adhesive disc vents are easy to apply, durable, and versatile. They come in different sizes, shapes, and constructions to fit various applications and environments. To choose the right vent for your application, you need to consider the size and shape of your enclosure, the location and orientation of the vent, the airflow and pressure requirements, the environmental conditions and exposure, and the installation method and equipment.

PorVent® offers a wide range of adhesive disc vents and can provide you with technical support, samples and customized solutions. If you want to learn more about adhesive disc vents and how they can benefit your application, please contact us.

**MOULDED COMPONENTS**

**PORVENT® MOULDED COMPONENTS**

Screw-in Series			Snap Fit Series		
PRODUCT	PRODUCT CODE	SPECIFICATION	PRODUCT	PRODUCT CODE	SPECIFICATION
	PVSV-M10	Material : PA6 M10 x 1.5 6g		PVSF-S	Material: PA6 Wall Thickness: 4mm
	PVSV-M12/N	Material : PA6 M12 x 1.5 6g			
	PVSV-M20/N	Material : PA6 M20 x 1.5 6g			
	PVSV-M12-SS	Material: SS316L M12 x 1.5 6g			

Moulded Venting components are a type of enclosure protection vent that can help your automotive components perform better and last longer. Screw-in vents are easy to install and integrate into your existing equipment, and they are made of durable materials that can withstand harsh environments.

PorVent® offers a wide range of screw-in and snap-fit vents with different sizes, shapes, materials, and media options to suit your specific needs. Choose a venting component that fits your enclosure, material, environment, protection needs and required airflow.

**CERTIFIED TO MEET INDUSTRY STANDARDS**

**Water & Dust ingress** : IP65, 66, 67 & 68\*, IP6K9K

**Flammability** : UL 94 V-0, 5VA

**Outdoor suitability** : UL 746C f2

**Thermal cycle** : IEC 60068-2-14:2009

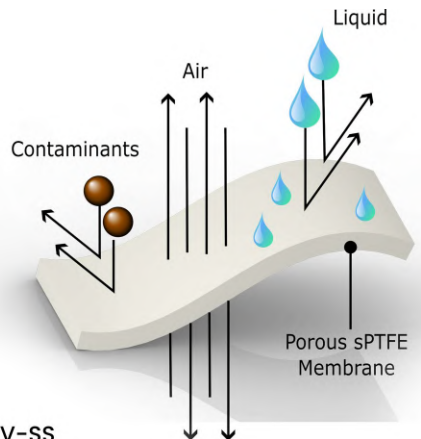
**Salt Fog\*** : IEC 60068-2-11

**Vibration** : AIS 156 (Annexure 8A)

**Mechanical Impact\*** : IK10



\*IP68 is a user defined test | \*applicable to PVSV-M12V-SS



**PORVENT'S MEMBRANE TECHNOLOGY**

Porous PTFE (polytetrafluoroethylene) is a high-performance material used in various applications where durability and reliability are crucial. This versatile material exhibits excellent liquid and dust repellence while allowing air to flow omnidirectionally through it. Its unique composition makes it ideal for protection vents commonly used by the packaging, electrical/automotive, and medical industries.

There are two types of porous PTFE: expanded PTFE (ePTFE), and sintered PTFE (sPTFE).

**MANUFACTURING PROCESS**

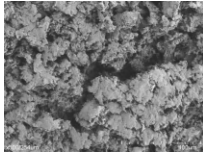
*Its like baking a cake!*

Porex sPTFE begins as a powder with tight particle size distribution. The powder goes through a forming and sintering process that fuses particles together but also creates a void between them.

*Heat and stretch rapidly!*

ePTFE is made by extrusion of PTFE resin mixed with a lubricant. The microporous structure of ePTFE is obtained by a process that involves rapid sequential stretching of the extruded shape at high temperature.

**sPTFE Membrane**



**DURABILITY**

Tough and robust. Not easily damaged when handled

**SUPPORT**

Pure PTFE, no lamination required

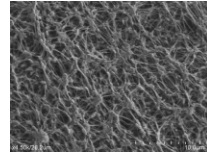
**AIRFLOW**

Stable and dependable flow rates

**REPELLENCE**

Inert and highly effective at material repellence

**ePTFE Membrane**



**DURABILITY**

Easily damaged when handled

**SUPPORT**

Has to be laminated with non-PTFE materials such as adhesives and polybackings

**AIRFLOW**

High, but inconsistent flow rates due to fragile nature

**REPELLENCE**

Inert and repellent, but tends to leave residue behind





Delivering innovation  
driven solutions to  
the world

**TECHNOLOGY  
INTERNATIONAL**

ISO 9001:2015 Certified

**POREX**  
Filtration Group

**PREFERRED  
CONVERTER**

**Address:** Technology International, 404, Synergy Square,  
Krishna Industrial Estate, Gorwa, Vadodara - 390016, Gujarat, India

**Phone:** +91-8141085000 • +91 265 - 2280282, 2282006

**Website:** [www.porvent.com](http://www.porvent.com) | **Email ID:** [info@porvent.com](mailto:info@porvent.com)